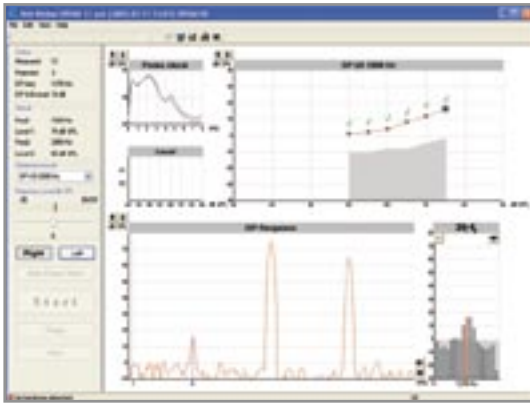
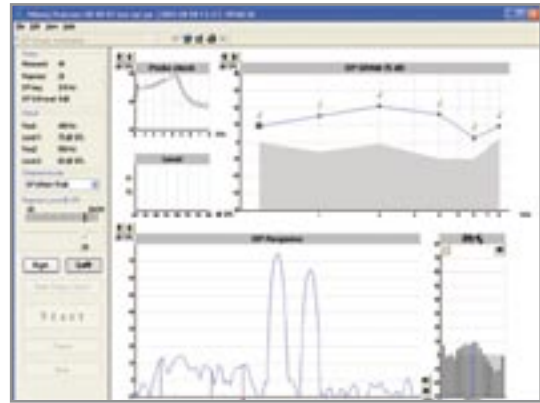


Eclipse OAE Modules

- Available as 'Stand Alone' or 'Add On' modules for EP systems



The DPOAE20 Input/Output screen



The DPOAE20 DP-gram screen

DPOAE20 Distortion OAE System

The DPOAE20 is an advanced clinical OAE device running on Windows XP that provides easy to use testing and analysis software. The quality recordings are captured and stored in the included database package for easy retrieval and data analysis. Printouts include colorful graphical displays with all pertinent data and even a time saving report writer for cover letters & summary reports. The DPOAE20 comes with common pre-programmed DP protocols including an Input/Output function OAE test. The DPOAE20 can even be launched within NOAH with shared demographic information to reduce duplicate data entry.

Utmost care has been taken to design a lightweight probe as to meet strict criteria for dependability and durability. The probe may be utilized for both DP & TE testing and comes with an interchangeable probe tip for neonates.

The DPOAE20 can be added to an EP15 or EP25 ABR system with all data being stored under one patient file. The synergy between the software programs reduces instrument training and test time.

DPOAE20 Specifications:

Stimulus:

Frequency Range: 500-8000 Hz

Frequency Step: 50 Hz

Level: 30-75 dB SPL (70 dB for freq. above 6kHz)

Level Step: 1 dB SPL

Transducer: Dedicated DPOAE20/TEOAE25 probe

Recording:

Analysis time: Minimum 2 sec to unlimited test time

A/D Resolution: 16 bit, 3.7 Hz resolution

Artifact Reject System: Adjustable. Applicable during testing

SNR Criteria: 1-20 dB SPL

Displays:

Probe fit - with stimulus and intensity.

Response

Level fit

DP-gram or Input/Output

Hardware:

OAE Probe

Interacoustics Eclipse

Probe:

TEOAE and DPOAE capable

Weight: 3 grams

Replaceable probe tip

Included Parts Upgrade Kit:

OPT25 Probe with interface

DPOAE20 and/or TEOAE25 Software

BET25 Assortment Box with eartips for OAE

NEOPT Neonatal Probetip

Operation Manual, CE Manual

Included Parts Eclipse:

Eclipse

OPT25 Probe with interface

Power Cable

USB connection cable

DPOAE20 and/or TEOAE25 software

Interacoustics database software

BET25 Assortment Box with eartips for OAE

NEOPT Neonatal Probetip

Operation Manual, CE Manual

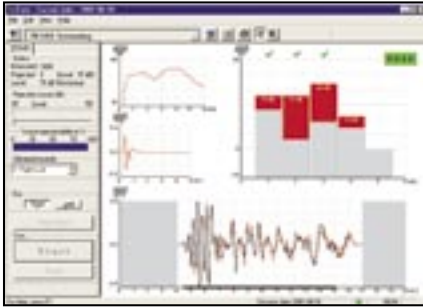


leading diagnostic solutions

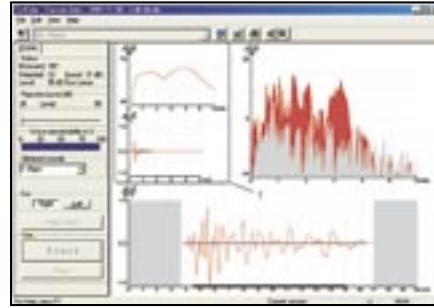


Eclipse OAE Modules

- Available as 'Stand Alone' or 'Add On' modules for EP systems



The TEOAE25 screen - Screening Mode



The TEOAE25 screen - Diagnostic Mode

TEOAE25 Transient OAE System

The TEOAE25 shares the same probe, hardware platform and database as the DPOAE20. This means that they share many similar features like pre-programmed test protocols, predefined Pass/Refer criteria and detailed clinical OAE test setups. These shared features create a very powerful and versatile diagnostic instrument for your clinic. The Eclipse platform also allows the addition of other test applications like diagnostic or screening ABR – making it a very cost effective clinical tool for your office.

EMR(electronic medical records)

Data may be easily transferred to medical records by printing to a PDF format.

Automated Screening

The automated Pass/Refer algorithm of the TEOAE25 provides a clear indication of the test results yet saves all of the raw data in the record for more detailed evaluation by a clinician. A security feature in the software prevents accidental changes to test protocols by non-authorized personnel and also safeguards the database against changes to patient files. Various Pass/Refer algorithms may be created to personalize the instrument to your specific needs.

Detailed Diagnostics

More advanced testing protocols are easily added to the selection menu to meet various clinical assessment needs and even for those involved in research. This means that the TEOAE25 is extremely easy to use and yet powerful enough to meet the most demanding needs in a busy clinic or medical facility.

TEOAE25 Specifications:

Stimulus: Linear or non linear clicks

Level: 50-90 dB SPL

Level Step: 1 dB SPL

Transducer: Dedicated DPOAE20/TEOAE25 probe

Accuracy: 0.5 dB

Bandwidth: 400 Hz – 4000Hz +/- 2dB

Recording:

Analysis time: 25 to 32000 samples

A/D Resolution: 16 bit, 3.7 Hz resolution

Artifact Reject System: 25 – 55 dB SPL or off. Applicable during testing.

SNR Criteria: 5 individual frequency bands can be set 1-30 dB SPL

Displays:

Probe fit – with stimulus and frequency response display

OAE time window, OAE FFT

1kHz Pass / Refer bands

1/3 octave bands, 1/6 octave bands, 1/12 octave bands

dB OAE, dB Signal to Noise ratio

Automated screening:

Algorithm included

Optional user defined algorithms

Security system - password protection

Auto tests:

Preprogrammed tests

Additional tests preprogrammable by user

Hardware:

OAE Probe

Interacoustics Eclipse

Probe:

TEOAE and DPOAE capable

Weight: 3 grams



Included Parts Upgrade Kit:

OPT25 Probe with interface

DPOAE20 and/or TEOAE25 Software

BET25 Assortment Box with eartips for OAE

NEOPT Neonatal Probetip

Operation Manual, CE Manual

Included Parts Eclipse:

Eclipse

OPT25 Probe with interface

Power Cable, USB connection cable

DPOAE20 and/or TEOAE25 software

Interacoustics database software

BET25 Assortment Box with eartips for OAE

NEOPT Neonatal Probetip

Operation Manual, CE Manual



Interacoustics USA

Phone: 1-800 947 6334

Fax: 1-952-903-4100

E-mail: info@interacoustics-us.com

Web: www.interacoustics.com

Mail: 7625 Golden Triangle Drive

Eden Prairie, MN 55344

